

LINORTEK **DATA COLLECTOR APP SETTING INSTRUCTION**

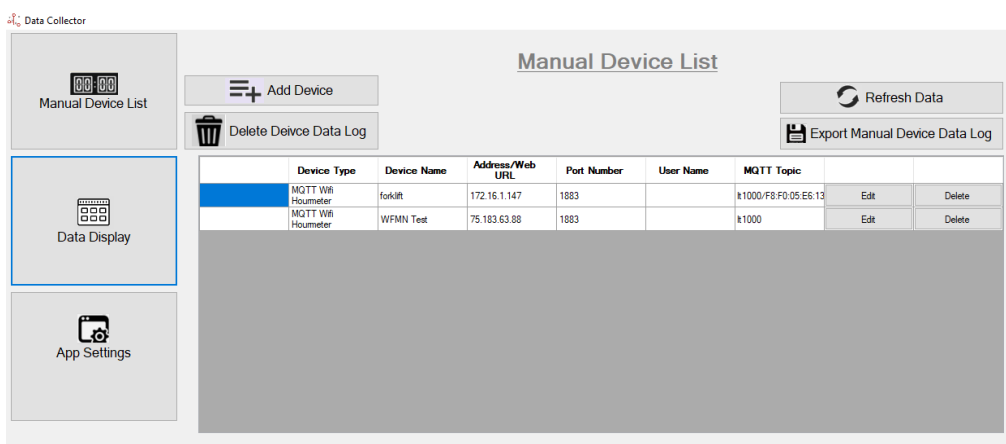
The **DataCollector** desktop app can listen for UDP broadcasts from our hour meter devices. It can record and log this data into a .csv file.

Alternatively, you can also set it to manually collect data. This is useful for port forwarded network hour meters as it can go out to the internet and read data off the device's XML pages. It can also collect data from the Wifi mini both via REST or subscribe to an MQTT broker.

To download the **DataCollector** app, please go to our website **Download - Support Programming** page, under Special Programs section, click **Download Linortek DataCollector App Pro**, select **Save as** on the download popup window: **<https://www.linortek.com/downloads/support-programming/>**.

After downloading the app, extract the zip file. There is a setup file name as "Linortek DataCollector .msi" which need to install in PC, please **READ** the **readme** file first for instructions on how to install the app.

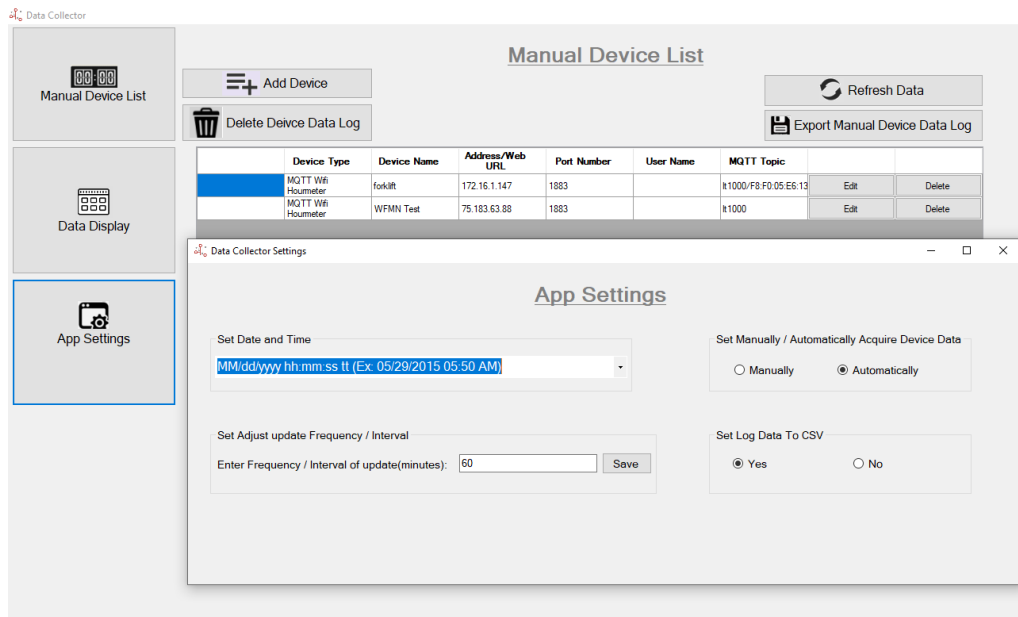
Once the DataCollector is installed on your PC, double click the program and it will open:



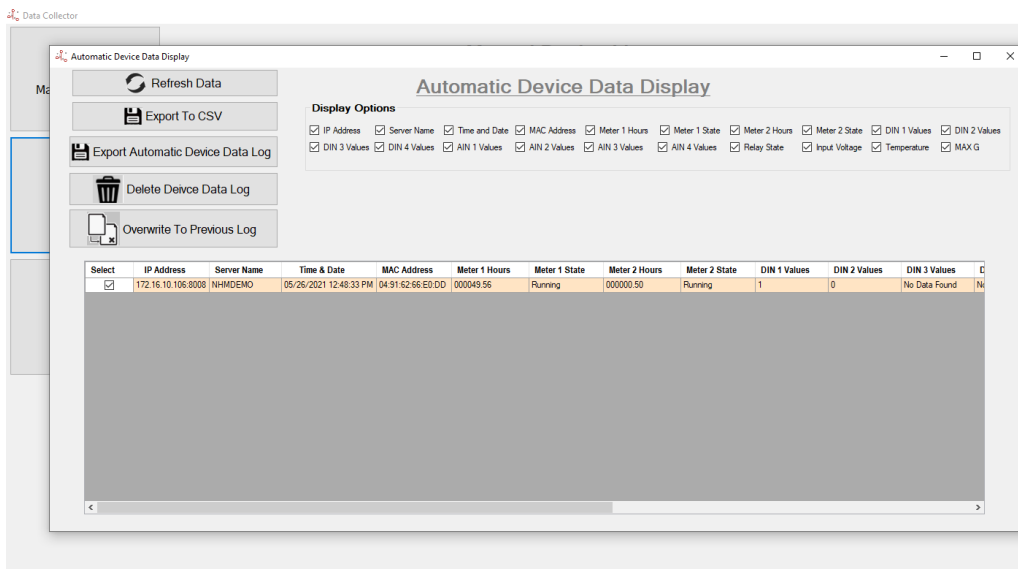
Using the DataCollector

1. Open the DataCollector app and navigate to the **App Settings** window.

- Set desired date and time format
- Choose whether you wish for DataCollector to listen for UDP message from Linortek devices (easy) or to manually collect device data (advanced)
- Choose whether to log data
- Choose update frequency (manual mode only)



2. If using **Automatic mode**, open the **Data Display** window. Data will be shown as it is received.



- Click on **Export to CSV** if you want to export just real time data log
- Click on **Export Automatic Device Data Log** if you want to download all previous data logs

3. If using **Manual mode**, navigate to the **Manual Device List** and click **Add Device**.

- Select your device type
- Enter device name
- Enter IP address (if local) or web address (if remote)
- Enter Port (if assigned)
- Enter user name and password for device
- Repeat the above for each device
- Open **Data Display** window. The DataCollector will automatically collect data for devices set in the **Device List**.